

Lot 225

Heurich Construction, Inc.



- Brick, Stone and Hardiplank Exterior
- 4 Bedrooms, 4.5 Baths
- Main Level Library with Bookcases
- Exquisite Custom Moldings
- Great Room with Fireplace
- Chef's Delight, Gourmet Kitchen with High End Stainless Steel Appliances featuring 6 Burner Gas Cook Top plus Griddle, Butler's Pantry & Walk-in Pantry
- Morning Room surrounded by Windows
- Main Level Laundry with Ceramic Tile Flooring
- Wide Plank Flooring on Main Level
- Luxurious Master Suite with Expansive Closet
- Master Bath with 2 Sink Vanities, Free Standing Tub, Luxurious Designer Ceramic Tile Walk-in Shower
- Volume Ceilings in All Bedrooms
- Granite Countertops in All Baths
- Junior Suite with Private Bath
- Walk-in Closets in Bedrooms 3 and 4
- Well Designed Jack and Jill Bath
- Composite Deck with Wrought Iron Railing, & Optional Fireplace
- 3 Car Attached Garage
- Quiet Cul-de-sac Location, Backs to Woods

**For more information call Bridget Minnock at
(C) 412.849.2762 or (O) 724.776.3686
EmeraldFieldsatPine.com**

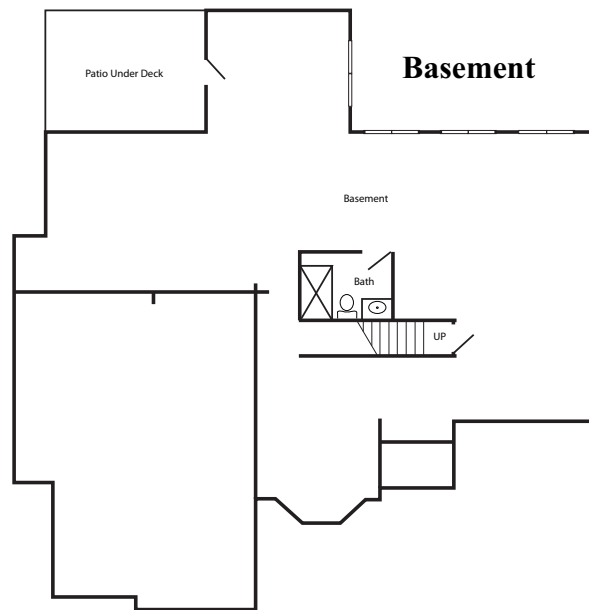
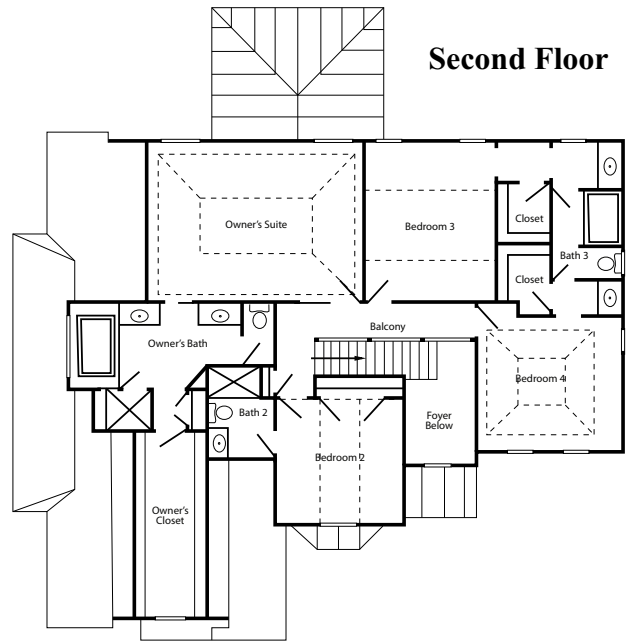
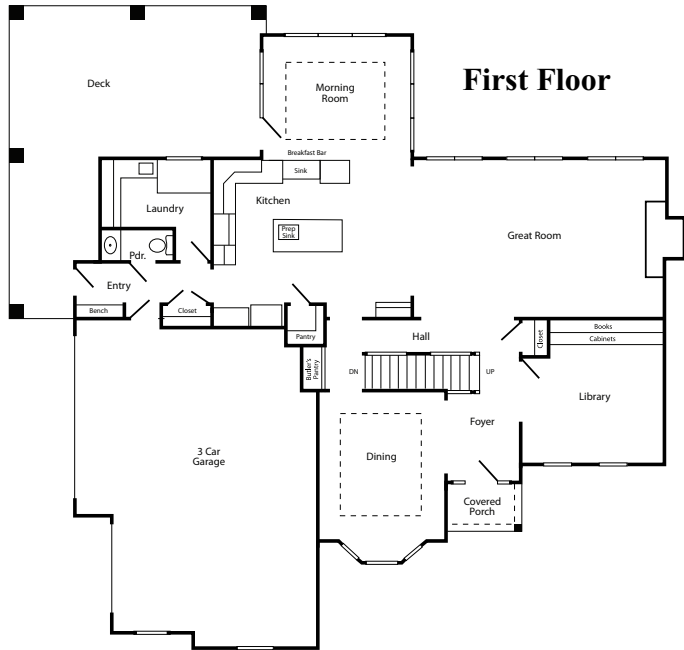


BERKSHIRE HATHAWAY
HomeServices

The Preferred Realty

Lot 225

Heurich Construction, Inc.



For more information call Bridget Minnock at
(C) 412.849.2762 or (O) 724.776.3686
EmeraldFieldsatPine.com



BERKSHIRE HATHAWAY
HomeServices

The Preferred Realty

©2017 BHH Affiliates, LLC. An independently owned and operated franchise of BHH Affiliates, LLC. Berkshire Hathaway HomeServices and Berkshire Hathaway HomeServices symbol are registered service marks of HomeServices of America, Inc. Equal Housing Opportunity. Information not verified or guaranteed. If your home is currently listed with a Broker, this is not a solicitation.